

MEMBER ORGANIZATIONS:

- Alberta Children's Hospital, AB
- Alberta Health Services, AB
- Baycrest, ON
- ★ Centre for Addiction and Mental Health, ON
- Chinook Regional, AB
- Cold Lake Health Care, AB
- Crowsnest Pass Health Centre, AB
- Drumheller Health Care, AB
- Grand River Hospital, ON
- Halton Healthcare Services, ON
- Headwaters Health Care Centre, ON
- Humber River Hospital, ON
- Kingston General Hospital, ON
- Mackenzie Health, ON
- Markham Stouffville Hospital, ON
- ★ Michael Garron Hospital, ON
- ★ Muskoka Algonquin Healthcare, ON
- North York General Hospital, ON
- Northern Lights, AB
- Ontario Shores, ON
- Orillia Soldiers' Memorial, ON
- Providence Healthcare, ON
- Red Deer Regional, AB
- Rockyview Hospital, AB
- Ross Memorial Hospital, ON
- Runnymede Healthcare Centre, ON
- Sacred Heart, AB
- Shared Services West, ON
- SickKids, ON
- Stevenson Memorial, ON
- Sturgeon Hospital, AB
- ★ Trillium Health Partners, ON
- Waypoint Centre, ON
- West Park Healthcare, ON
- Westview Hospital, AB
- Wetaskiwin, AB
- William J. Cadzow Health Centre, AB
- William Osler Health System, ON
- Women's College Hospital, ON

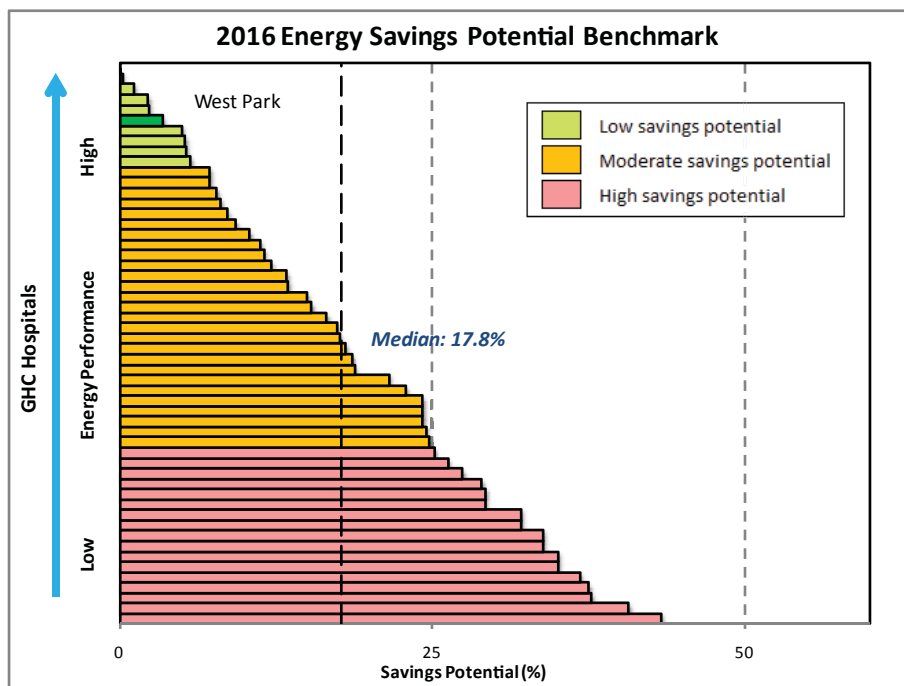
Member Report – West Park Healthcare

Your 2016 Energy Performance

West Park remains among the top performers with low savings potential.

Your Savings Potential \$/year:

Electricity	\$6,972
Natural Gas	\$15,440
Water	\$96,368
TOTAL	\$118,781



The savings potential chart shows how your sites are positioned relative to other member facilities, and progressing towards their target energy use. Hospitals that reach their targets are awarded gold (target reached) and those that are close are awarded silver (within 5% of target)

Your Energy and Water Targets

Your target energy, water and dollar savings are shown below. This is how much you will save by achieving a good standard of energy performance. The target for each energy and water component is updated every year based on the top 25% performance standard from similar hospital types. Targets are adjusted for site-specific variables including heating and cooling sources, laundry and research space.

Hospital	Electricity (kWh/ft ²)				Thermal (ekWh/ft ²)				Total Energy (ekWh/ft ²)		Total Water (litres/ft ²)	
	Base		Cooling		Base		Heating		2016	Target	2016	Target
	2016	Target	2016	Target	2016	Target	2016	Target				
West Park	14.2	14.1	1.6	1.6	12.4	9.2	8.6	10.7	36.9	35.6	192.0	135.0

Base components relate to systems that run throughout the year regardless of weather, such as lighting, medical or IT equipment, domestic hot water and fans. The cooling component is additional energy used in summer for air conditioning, and heating is the extra energy used for heat and humidification during winter months.

PROGRAM SPONSORS:



Hospital	Energy Savings Potential		Water Savings Potential	
	%	\$/year	%	\$/year
West Park	3%	\$22,412	30%	\$96,368

For more information on membership or sponsorship opportunities, contact:

Gemma Stott-Correia
gstott@trca.on.ca

Follow us on Twitter
@GreeningHealthC

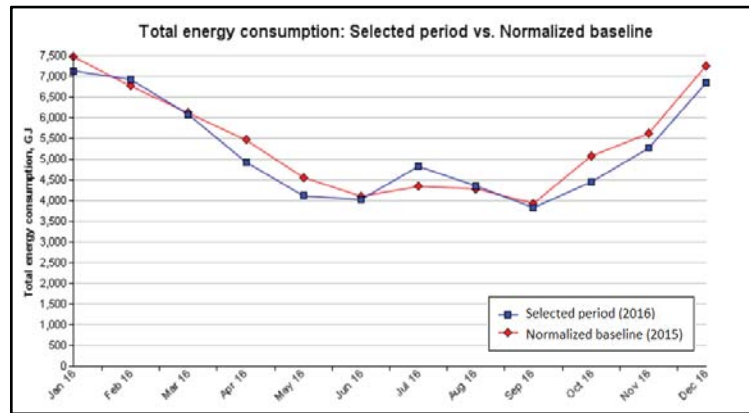


Making the Connections

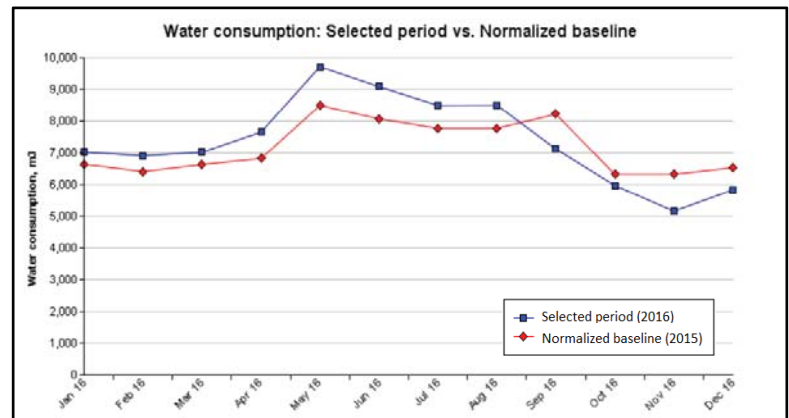
The building systems and conservation actions you should focus on for the biggest savings are determined by your savings targets. Savings components shaded in red have high savings potential, amber have moderate potential, and green are your most efficient with little or no potential. Checklists are available to assist you with possible energy efficiency measures associated with each component.

Your 2016 Savings

Savings are monitored through the Greening Health Care online reporting system which you can access at any time at <https://ghc.enerlife.com>. The blue line is your 2016 monthly use, and is compared with the red line which is your 2015 weather-normalized baseline. Real savings were achieved in months where the blue line is below the red.



The hospital reduced both electricity and gas use for the year, primarily in the last 4 months.



Overall water use increased for the year, but with significant savings for the last 4 months.

THE PROGRAM

Founded in 2003, Greening Health Care is the largest program of its kind in North America, helping hospitals work together to lower their energy costs, raise their environmental performance and contribute to the health and well-being of their communities. Members manage data, assess their performance and track savings using a powerful online system. They share knowledge and best practices through workshops, webinars and networking to help plan, implement and verify improvements. This is a program of The Living City managed by Toronto and Region Conservation.

www.greeninghc.com

GREENING HEALTH CARE IS
MANAGED BY:



TECHNICAL
DIRECTION BY:



Summary of 2016 Savings

	Electricity	Gas	Water	Total	%
West Park	\$31,044	\$9,883	-\$8,966	\$31,960	3.4%

Legend:

Savings
Increases