

## Member Report – West Park Healthcare

### MEMBER ORGANIZATIONS:

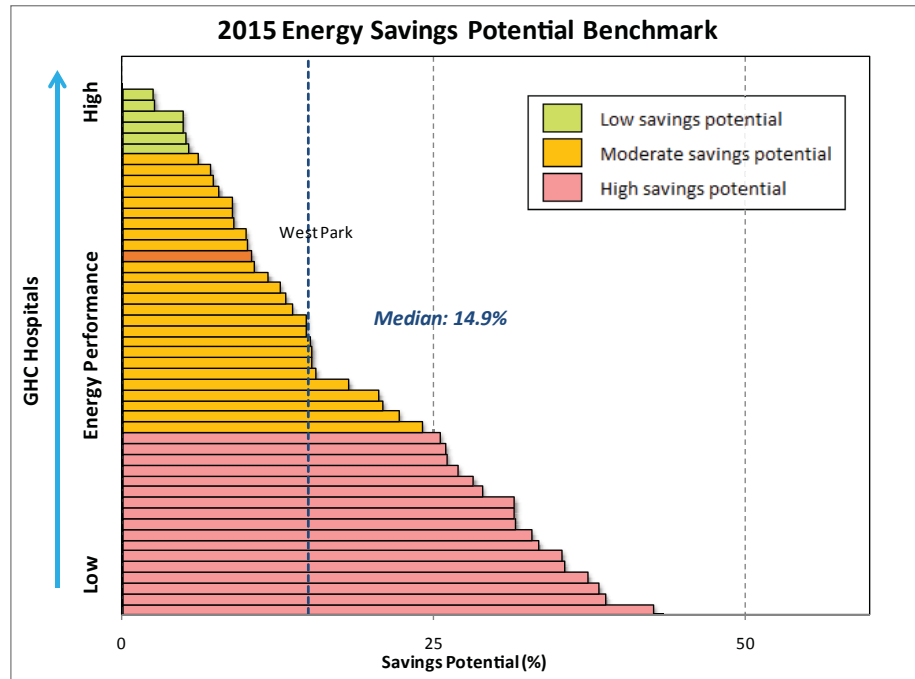
- Alberta Children's Hospital, AB
- Alberta Health Services, AB
- ★ Baycrest, ON
- Centre for Addiction and Mental Health, ON
- Chinook Regional, AB
- Cold Lake Health Care, AB
- Credit Valley Hospital, ON
- Crowsnest Pass Health Centre, AB
- Drumheller Health Care, AB
- Grand River Hospital, ON
- Halton Healthcare Services, ON
- Headwaters Health Care Centre, ON
- ★ Humber River Hospital, ON
- ★ Kingston General Hospital, ON
- Mackenzie Health, ON
- Markham Stouffville Hospital, ON
- Michael Garron Hospital, ON
- Muskoka Algonquin Healthcare, ON
- North York General Hospital, ON
- Northern Lights, AB
- Ontario Shores, ON
- Orillia Soldiers' Memorial, ON
- Providence Healthcare, ON
- Red Deer Regional, AB
- Rockyview Hospital, AB
- Ross Memorial Hospital, ON
- Runnymede Healthcare Centre, ON
- Sacred Heart, AB
- Shared Services West, ON
- SickKids, ON
- Stevenson Memorial, ON
- Sturgeon Hospital, AB
- ★ Trillium Health Partners, ON
- Waypoint Centre, ON
- West Park Healthcare, ON
- Westview Hospital, AB
- Wetaskiwin, AB
- William J. Cadzow Health Centre, AB
- William Osler Health System, ON

### Your 2015 Energy Performance

West Park has moderate savings potential of 10% remaining!

### Your Savings Potential \$/year:

Electricity	\$30,416
Natural Gas	\$40,558
Water	\$76,240
<b>TOTAL</b>	<b>\$147,213</b>



The savings potential chart shows how your sites are progressing towards their target energy use. Hospitals that reach their targets are awarded gold (target reached) and those that are close are awarded silver (less than 5% over target)

### Your Energy and Water Targets

Your component energy, water and dollar savings potentials are shown below. This is how much you will save by achieving a good standard of energy performance. The target for each component is updated every year based on the top 25% performance standards from similar hospital types. Targets are adjusted for non-standard, site-specific variables including energy sources, laundry and research space.

Hospital	Electricity (kWh/ft <sup>2</sup> )				Thermal (ekWh/ft <sup>2</sup> )				Total Energy (ekWh/ft <sup>2</sup> )		Total Water (litres/ft <sup>2</sup> )	
	Base		Cooling		Base		Heating		2015	Target	2015	Target
	2015	Target	2015	Target	2015	Target	2015	Target				
West Park	14.6	14.1	1.4	1.4	10.9	7.8	12.3	11.8	39.2	35.2	0.0	0.0

Base components relate to systems that run throughout the year regardless of weather, such as lighting, medical or IT equipment, domestic hot water and fans. The Cooling component is additional energy used in the summer for air conditioning, and Heating is the extra energy used for heat and humidification during winter months.

Hospital	Energy Savings Potential		Water Savings Potential	
	%	\$/year	%	\$/year
West Park	10%	\$70,973	27%	\$76,240

### PROGRAM SPONSORS:



For more information on membership or sponsorship opportunities, contact:

Bernie McIntyre  
(416) 661-6600 ext 5326  
BMcIntyre@trca.on.ca

Follow us on Twitter  
@GreeningHealthC

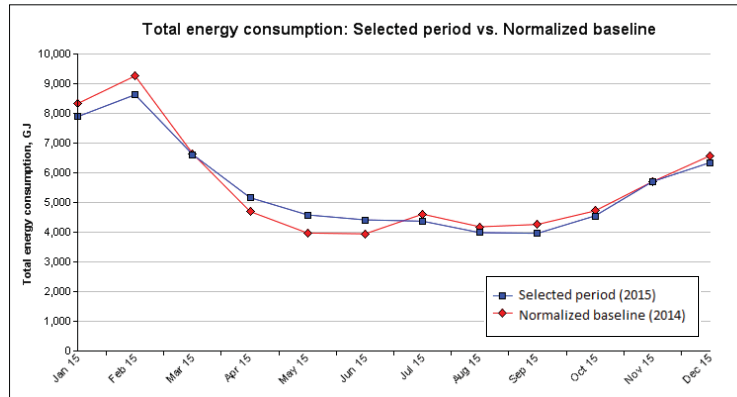


## Making the Connections

The building systems and conservation actions you should focus on for the biggest savings are determined by your savings targets. Savings components shaded in red have high savings potential, orange have moderate potential, and green have low potential.

## Your 2015 Savings

Savings are monitored through the Greening Health Care online reporting system which you can access at any time at <https://ghc.enerlife.com>. The blue line is your 2015 use, and is compared with the red line which is your 2014 weather-normalized baseline. Real savings were achieved in months where the blue line is below the red.



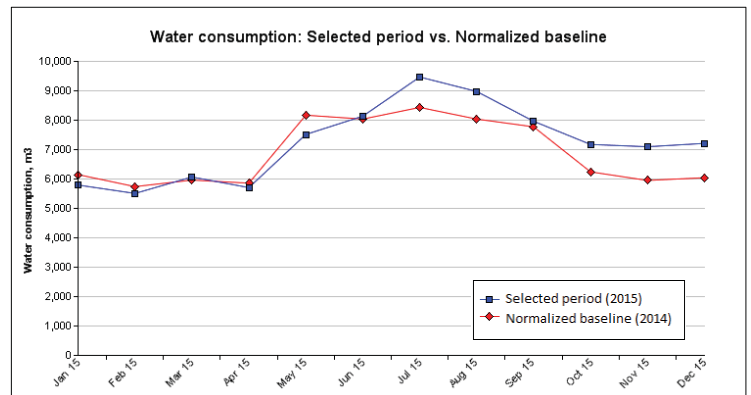
West Park reduced 2015 energy in all months outside of a second quarter increase.

## THE PROGRAM

Founded in 2003, Greening Health Care is the largest program of its kind in North America, helping hospitals work together to lower their energy costs, raise their environmental performance and contribute to the health and well-being of their communities. Members manage data, assess their performance and track savings using a powerful online system. They share knowledge and best practices through workshops, webinars and networking to help plan, implement and verify improvements. This is a program of The Living City managed by Toronto and Region Conservation.

[www.greeninghc.com](http://www.greeninghc.com)

The water consumption for the first six months of the year was less than 2014, but increases during the summer and estimated billing ended the year with an overall increase.



GREENING HEALTH CARE IS  
MANAGED BY:



TECHNICAL  
DIRECTION BY:



## Summary of 2015 Savings

	Electricity	Gas	Water	Total	%
West Park	\$21,449	-\$1,055	-\$14,176	\$6,219	1.0%

Legend:

Savings
Increases