

## Member Report – West Park Healthcare

### MEMBER HOSPITALS:

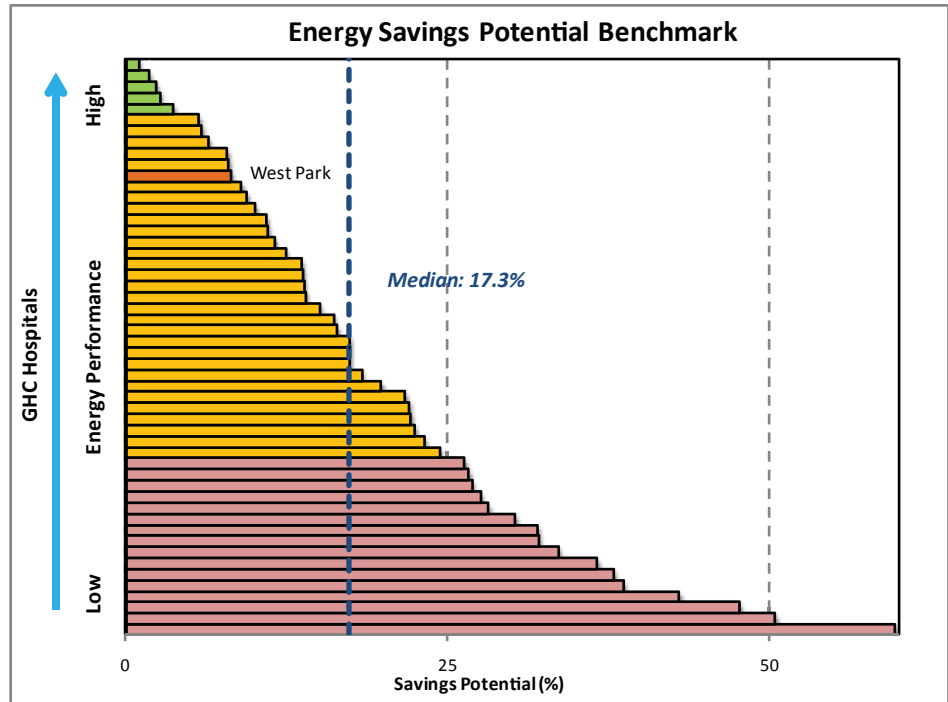
- Alberta Children's Hospital, AB
- Alberta Health Services, AB
- Baycrest, ON
- Centre for Addiction and Mental Health, ON
- Chinook Regional, AB
- Cold Lake Health Care, AB
- Credit Valley Hospital, ON
- Crow's Nest Pass, AB
- Drumheller Health Care, AB
- Grand River Hospital, ON
- Halton Healthcare Services, ON
- Headwaters Health Care Centre, ON
- Humber River Hospital, ON
- Kingston General Hospital, ON
- Mackenzie Health, ON
- Markham Stouffville Hospital, ON
- Muskoka Algonquin Healthcare, ON
- North York General Hospital, ON
- Northern Lights, AB
- Ontario Shores, ON
- Orillia Soldiers' Memorial, ON
- Providence Healthcare, ON
- Red Deer Regional, AB
- Rockyview Hospital, AB
- Ross Memorial Hospital, ON
- Runnymede Healthcare Centre, ON
- Sacred Heart, AB
- Shared Services West, ON
- SickKids, ON
- Stevenson Memorial, ON
- Sturgeon Hospital, AB
- Toronto East General Hospital, ON
- Trillium Health Partners, ON
- Waypoint Centre, ON
- West Park Healthcare, ON
- Westview Hospital, AB
- Wetaskiwin, AB
- William J. Cadzow Health Centre, AB
- William Osler Health System, ON

### Your 2014 Energy Performance

West Park is a top-performer with 8% targeted room for improvement!

### Your Savings Potential \$/year:

Electricity	\$3,021
Natural Gas	\$36,105
Water	\$55,722



This savings potential chart shows how your sites are progressing towards their target energy use. Hospitals that reach their targets will be recognized in 2015

### Your Energy and Water Targets

Your target energy, water and dollar savings are shown below. This is how much you will save by achieving a good standard of energy performance. The target for each energy and water component is updated every year based on the top 25% performance standards from similar hospital types. Targets are adjusted for non-standard, site-specific variables including energy sources, laundry and research space.

Hospital	Electricity (kWh/ft2)				Thermal (ekWh/ft2)				Total Energy (ekWh/ft2)		Total Water (litres/ft2)	
	Base		Cooling		Base		Heating		Actual	Target	Actual	Target
	Actual	Target	Actual	Target	Actual	Target	Actual	Target				
West Park	15.1	15.0	1.1	1.1	11.6	7.8	12.5	13.0	40.3	37.0	174.9	135.0

Base components relate to systems that run throughout the year regardless of weather, such as lighting, medical or IT equipment, domestic hot water and fans. The cooling component is additional energy used in summer for air conditioning, and heating is the extra energy used for heat and humidification during winter months.

### PROGRAM SPONSORS:



Hospital	Energy Savings Potential		Water Savings Potential	
	%	\$/year	%	\$/year
West Park	8.1%	\$39,127	22.8%	\$55,722

For more information on membership or sponsorship opportunities, contact:

Brian Dundas  
(416) 661-6600 ext 5262  
BDundas@trca.on.ca

Follow us on Twitter  
@GreeningHealthC

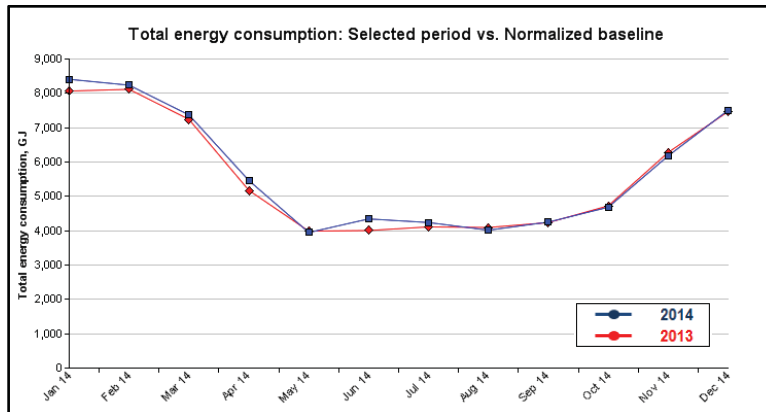


## Making the Connections

The building systems and conservation actions you should focus on for the biggest savings are determined by your savings targets. Savings components shaded in red have high savings potential, orange have moderate potential, and green have low potential. Refer to <http://www.trca.on.ca/the-living-city/index.dot> for guidance in finding the best projects based on your particular energy use profile.

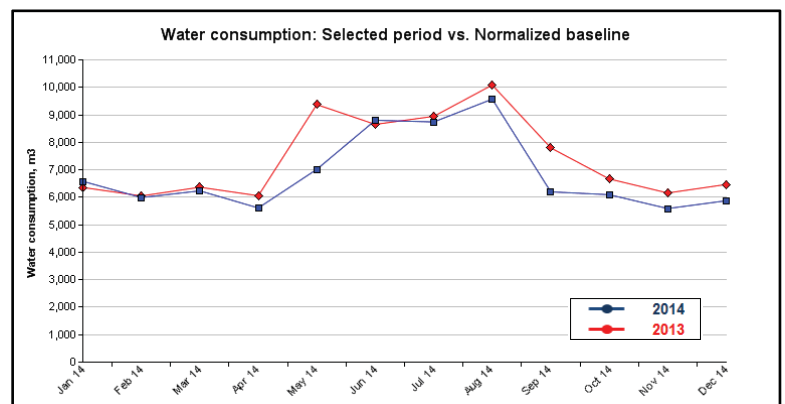
## Your 2014 Energy and Water Savings

Monthly savings are monitored through the Greening Health Care online reporting system which you can access at any time at <https://ghc.enerlife.com>. The blue line is your 2014 use, and is compared with the red line which is your 2013 weather-normalized baseline. Real savings were achieved in months where the blue line is below the red. Your total energy and water savings are summarized below.



Energy use in 2014 was consistent with the 2013 baseline, and a net overall increase of 1.7%

Results show overall water savings for the year, with the biggest improvements made in summer months.



[www.greeninghc.com](http://www.greeninghc.com)

GREENING HEALTH CARE IS MANAGED BY:



TECHNICAL DIRECTION BY:



	Electricity	Gas	Water	Total	%	Savings
West Park	\$6,798	-\$9,016	\$20,680	\$18,462	-1.7%	Increases